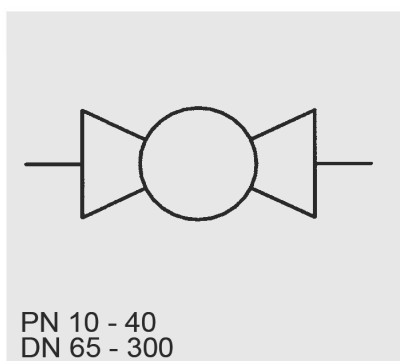


HYDAC INTERNATIONAL



Flanged Ball Valves KHFF



Model code
(also order example)

KHFF 100 PN040 10333 06 X

Designation

KHFF = Flange ball valve DN 65 - 300 (short version - DIN EN 558-1 - series 27)
KHF = Flange ball valve DN 65 - 300 (long version - DIN EN 558-1 - series 1)

Nominal bore

Pressure range

Materials

Housing

3 = Stainless steel (1.4408)
10 = Cast steel (1.0619)

Ball

3 = Stainless steel (1.4408 / 1.4308)

Ball seal

3 = PTFE + 25% glass fibre reinforced

Stem seal

3 = PTFE

(other materials on request)

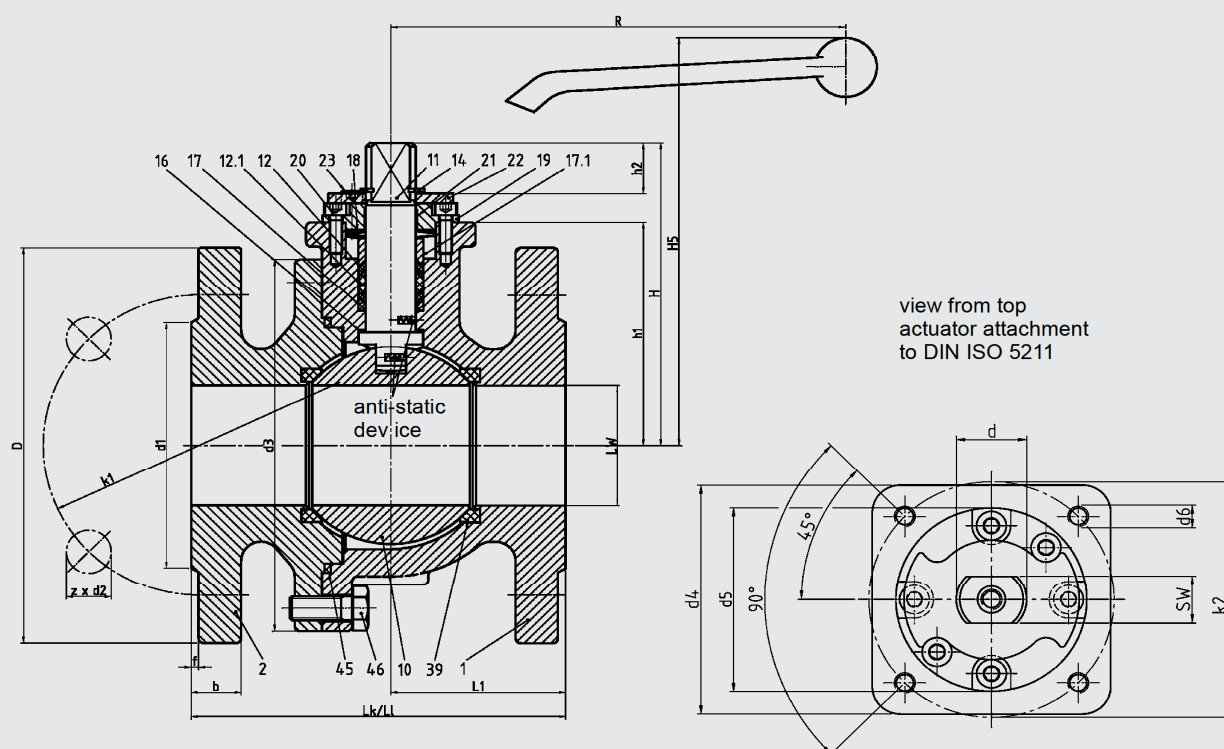
Handle

06 = Steel bolt-on handle, cranked

Series

(determined by manufacturer)

KHFF



Item	Description
1	Body 1
2	Body 2
10	Ball
11	Stem
12	Stem seal
12.1	Stem seal
14	Safety ring
16	Thrust ring
17	Ring
17.1	Gland
18	Belleville-type washer
19	Cover
20	Socket head screw
21	Bearing strip
22	Stop disc
23	Socket head screw
39	Ball seat ring
45	Body seal
46	Hexagon bolt

Dimensions

DN	PN	LW	L _k *	L _l *	L1	d3	H	H5	h1	h2	d	SW	k1	d1	d2	d4	d5	d6	k2	R	D	b	f	z	Wt. kg L _k *	Wt. kg L _l *	ISO 5211
65	40	65	170	290	80	190	150	195	115	18	20	14	145	122	18	96	70	M10	102	215	185	22	8	2	20	21.5	F10
80	40	80	180	310	86	208	161	211	124	20	25	19.3	160	138	22					300	200	24			25	27.5	
100	40	100	190	350	94.5	242	178	228	141				190	162	22					235	24	33.5			37.5		
125	16	125	325	400	162.5	290	265	270	222	30	35	25.5	210	188	18	635	250	22	67	72	F12						
125	40												220	26	270		26	72	77								
150	16	150	350	480	175	327	297.5	301	242.5	41.5	44	32	240	212	22	150	85	M12	125	800		285			22	100	106
150	40												250	218	26							300			28	106	112
200	10												200	400	600						200	400			335	338	280
200	16	26	164	176																							
200	25	360			30	172	184																				
200	40	375			34																						
250	10	250	450	-	225	492	390	-	330	51	48	36	350	320	22	175	100	M16	140	-	395	26	12	16	255	-	F14
250	16												355	26	405						26	257					
250	25												370	335	30						425	32			272		
250	40												385	345	33						450	38			292		
300	10	400	370	22	445	26	339																				
300	16	410	378	26	460	28	340																				
300	25	430	395	30	485	34	355																				
300	40	450	410	33	515	42	380																				

* L_k = short version - DIN EN 558-1 - series 27

* L_l = long version - DIN EN 558-1 - series 1

Technical specifications

Flange connections:	DIN EN 1092 - 1 : 2000, DN 65 - DN 300, PN 10 - PN 40
Raised face:	DIN EN 1092 - 1 : 2000 Form B1 (others on request)
Face-to-face:	DIN EN 558- 1 Series 27 (F4/F5), DIN EN 558- 1 Series 1 (F1)
Stem seal:	PTFE or graphite stuffing box, supported by Belleville-type washer. Belleville-type washers are completely enclosed and protected against ingress of dirt.
Operation:	By stem on two flats according to NAMUR recommendation.
Top flange:	DIN ISO 5211 for hand-operation by worm gear, pneumatic, electric or hydraulic actuator.
Test certificates:	EN 10204 2.2 or 3.1 B/C/A
Certification according to:	PED 97/23/EC Manufactured to AD-2000 TA - Luft 2002 (Technical Instructions on Air Quality Control) Fire - safe BS 6755, part 2 (DN 65 - DN 100) DIN DVGW Reg. no. NG-4313AP1147 (German Technical and Scientific Association for Gas and Water) DIN EN ISO 9001 - TÜV CERT -
Accessories:	Stem extension, locking and positioning device, heating jackets and high quality sensors. (additional equipment on request)
Temperature range:	-50 °C to + 230 °C, depending on ball seals.
Application:	Neutral gases and fluids, mineral oil products, alkalis, corrosive fluids and gases.

NOTE

The information in this brochure relates to the operating conditions and applications described.

For applications and operating conditions not described, please contact the relevant technical department.

Subject to technical modifications.

